



# Waste Guide

---

A Comprehensive Guide to  
Sustainable Waste Disposal







## Who are Bywaters

Bywaters is London's leading sustainable waste management company, servicing London and the South East. We help businesses from all sectors increase their recycling rates and reduce their emissions. Our management services include reusing, recycling and recovering waste from different waste streams, reporting on client waste and environmental performance, and providing various equipment and engineering services. The sectors we service include property management, facilities management, healthcare, education, hospitality, events and construction.

We receive mixed recyclable waste to our Material Recovery Facility (MRF) in East London and work with a range of partners to collect different specialised waste streams, such as general waste, food waste, coffee grounds, coffee cups, WEEE and battery waste, among others. The MRF processes over 100,000 tonnes of material annually and has a recovery rate of 95%.

At Bywaters, we strive to be as sustainable as possible. We achieve this through our Euro 6 fleet and electric vehicle, 4,000 solar panels to help power our MRF, our commitment to sending zero waste to landfill and our goal to achieve net zero by 2030.





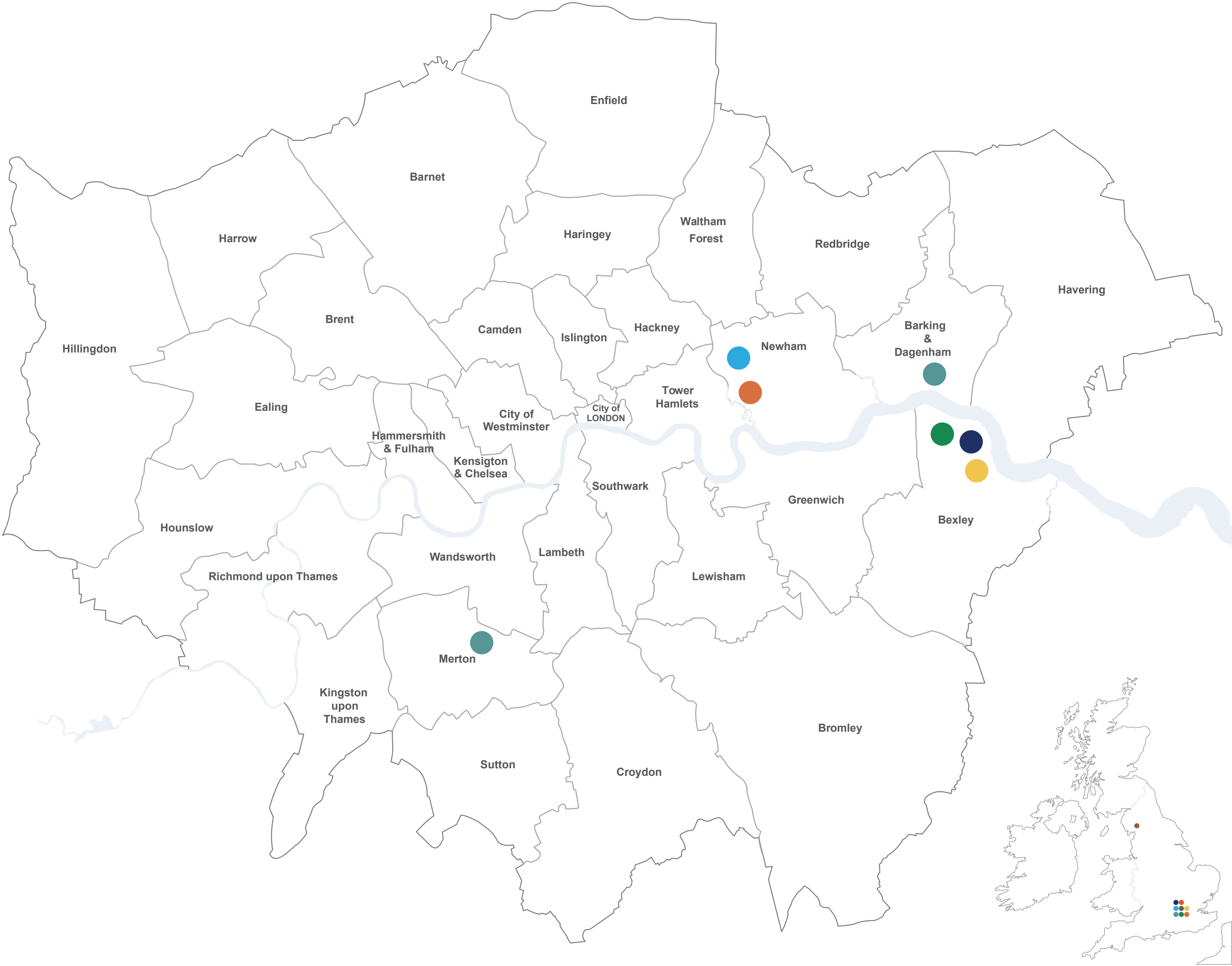
# Where Does Your Waste Get Reprocessed

- Dry Mixed Recycling
- Non-Recycling
- Food Waste
- Glass
- Coffee Cup
- Coffee Grounds
- Battery
- Waste Electrical and Electronic Equipment (WEEE)
- Bulky Waste
- Cooking Oil



James Cropper Mill, Bridge St, Burneside, Kendal LAE9 6PZ

Envar, Somersham Rd, Woodhurst, Somersham, Huntingdon PE28 3BS



## Circular Dry Mixed Recycling (DMR)

**Common items disposed of in the DMR waste stream**  
Paper, plastic (PET, HDPE, LDPE, PP), cardboard and aluminium.

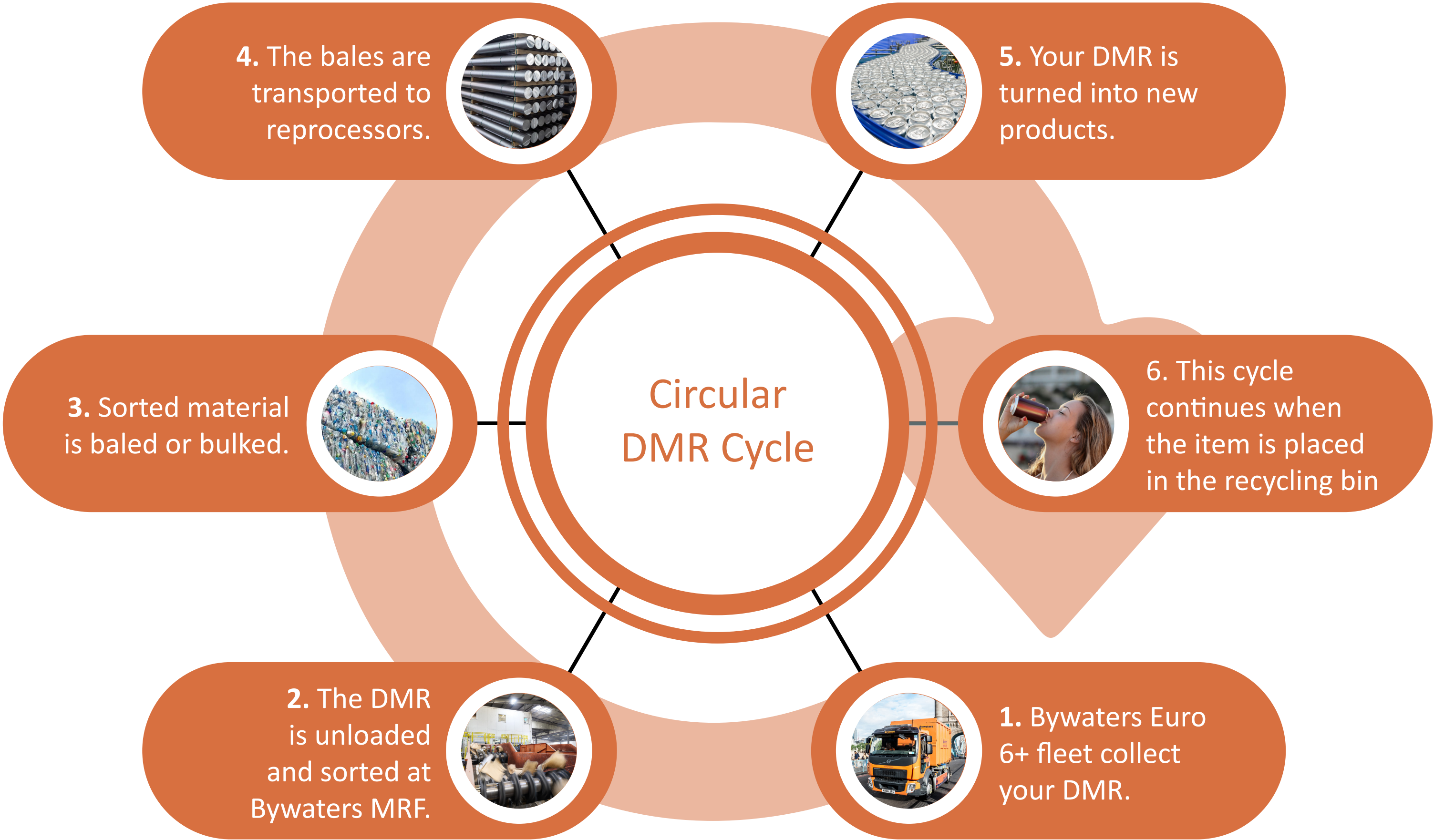
**Main contaminants**

Food packaging, compostable or biodegradable packaging, paper (napkins) and wooden stirrers.

**Benefits of recycling**

In the UK, recycling saves between 10 to 15 million tonnes of CO<sub>2</sub> emissions annually. This is equivalent to removing 3.5 million cars off the road.

Recycling saves on energy use, as producing items from recycled materials often uses less energy than making them from virgin resources. E.g. Recycled drink cans use up to 95% less energy than making them from new aluminium.





## Circular Non-Recycling

Common items disposed of in the non-recycling stream  
Composite material packaging, polystyrene plastic, contaminated tissues and contaminated food packaging.

### Main contaminants

Recyclable materials (plastic/paper/aluminium cans, glass, cardboard) and food waste.

### Benefits of recovery

The byproducts from the incineration process are reused. The ash from the incinerated waste is used in the construction industry as aggregate, and the heat produced from the incineration is used to produce energy, by passing through and spinning turbines. 675.89 kWh of energy is produced per tonne of non-recyclable waste that is processed at the Cory Group, Bywaters' incineration partner facility.



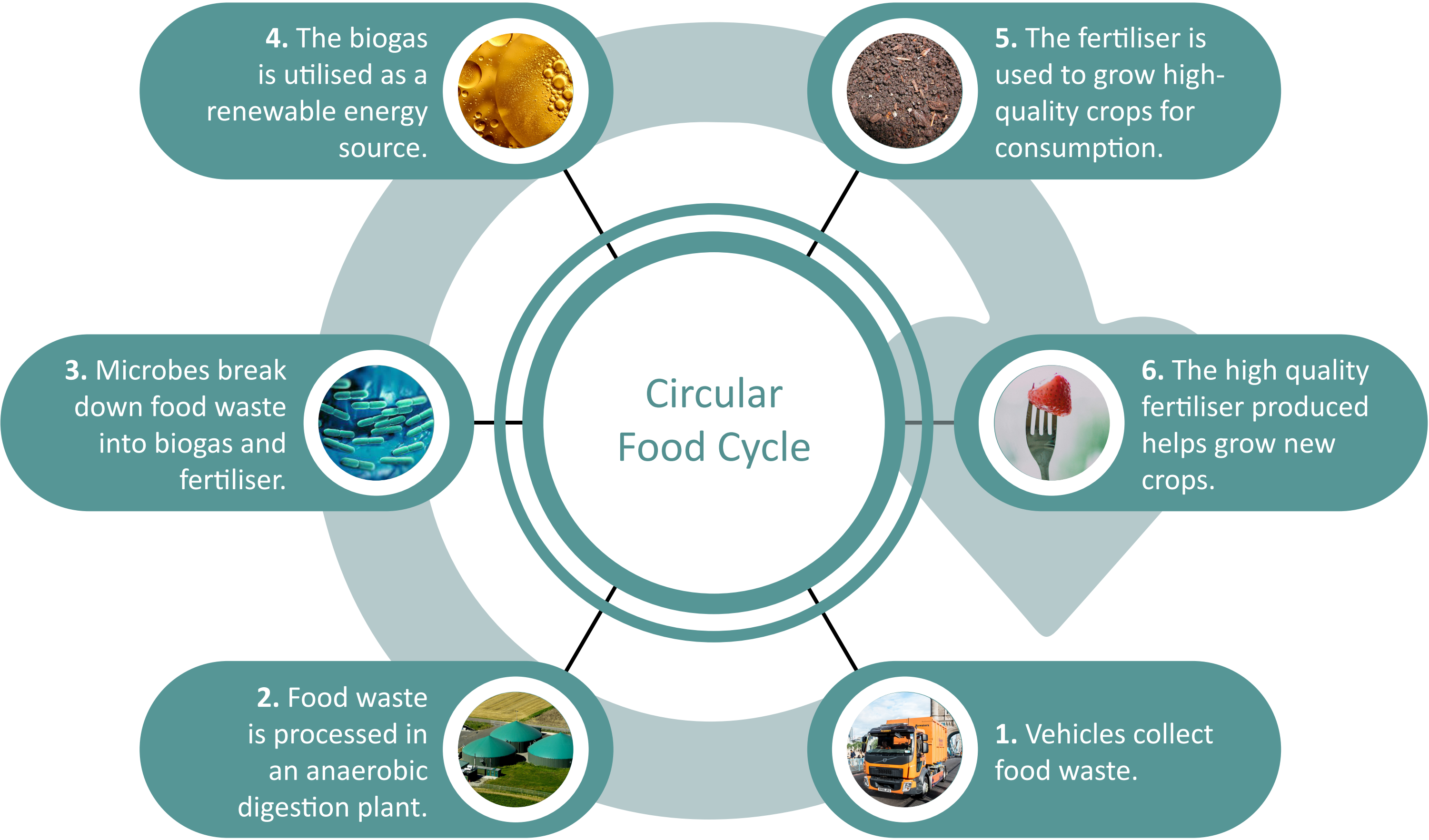


# Circular Food Waste

**Common items disposed of in the food waste stream**  
All foods can go in, including tea bags, coffee grounds, small fish and meat bones.

**Main contaminants**  
Food packaging, compostable/biodegradable packaging, paper (napkins) and wooden stirrers.

**Benefits of recycling**  
When food waste ends up in landfills, it decomposes, releasing methane, a potent greenhouse gas with 25 times the heat-trapping ability of carbon dioxide (CO<sub>2</sub>). Diverting edible food waste from landfills in the UK could save an estimated 36 million tonnes of greenhouse gas emissions.



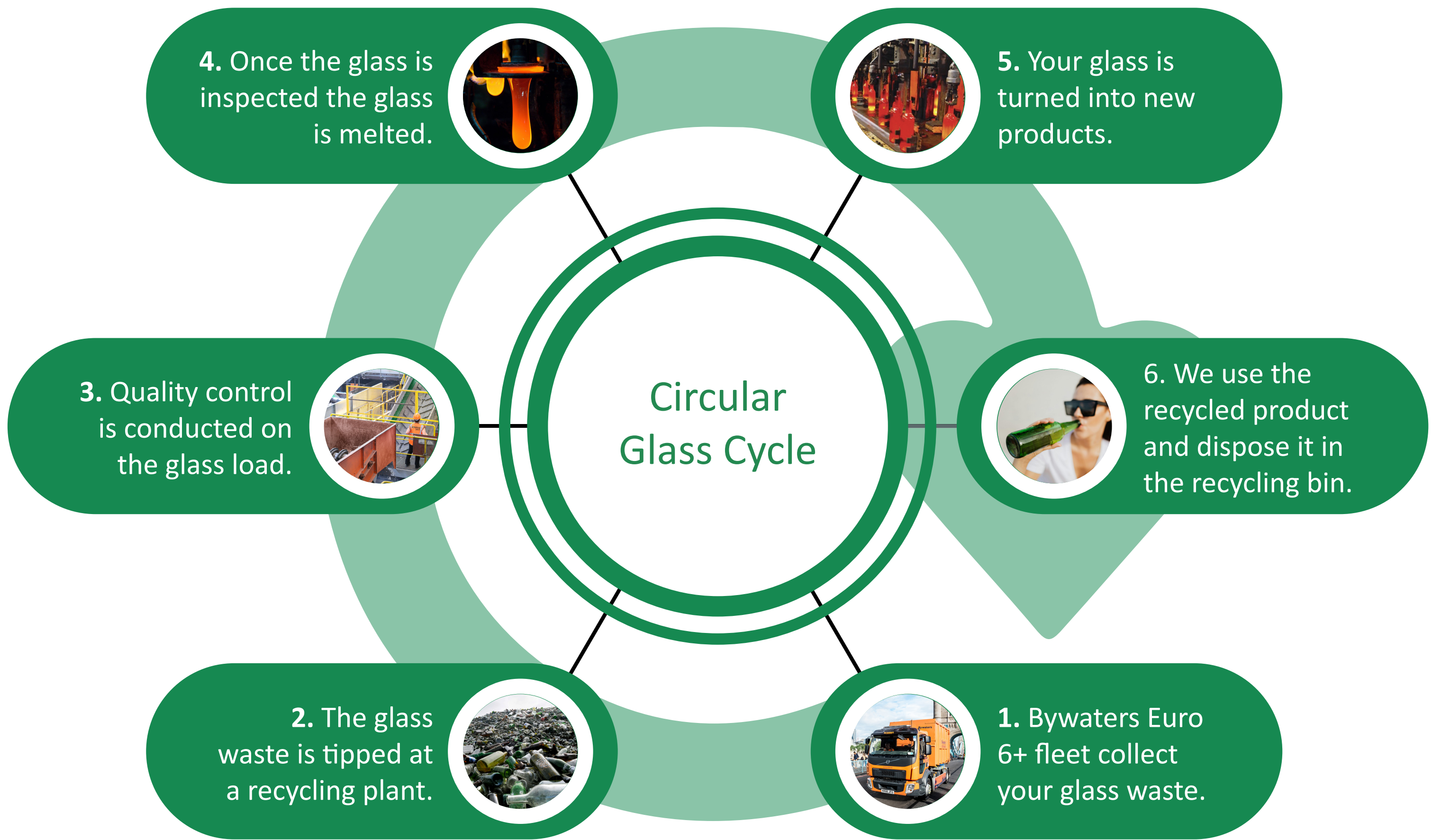


# Circular Glass

Common items disposed of in the glass waste stream  
Glass of any colour (clear/brown/green).

Main contaminants  
Ceramics and anything that isn't glass, including liquid or condiments that were in the glass bottle or container.

Benefits of recycling  
Recycling glass reduces the amount of virgin material consumed and the associated emissions it takes to process. Compared to producing virgin glass products, recycling glass reduces air pollution by 20%, saves 25 to 32% in terms of energy use and reduces related water pollution by 50%.





## Circular Coffee Cups

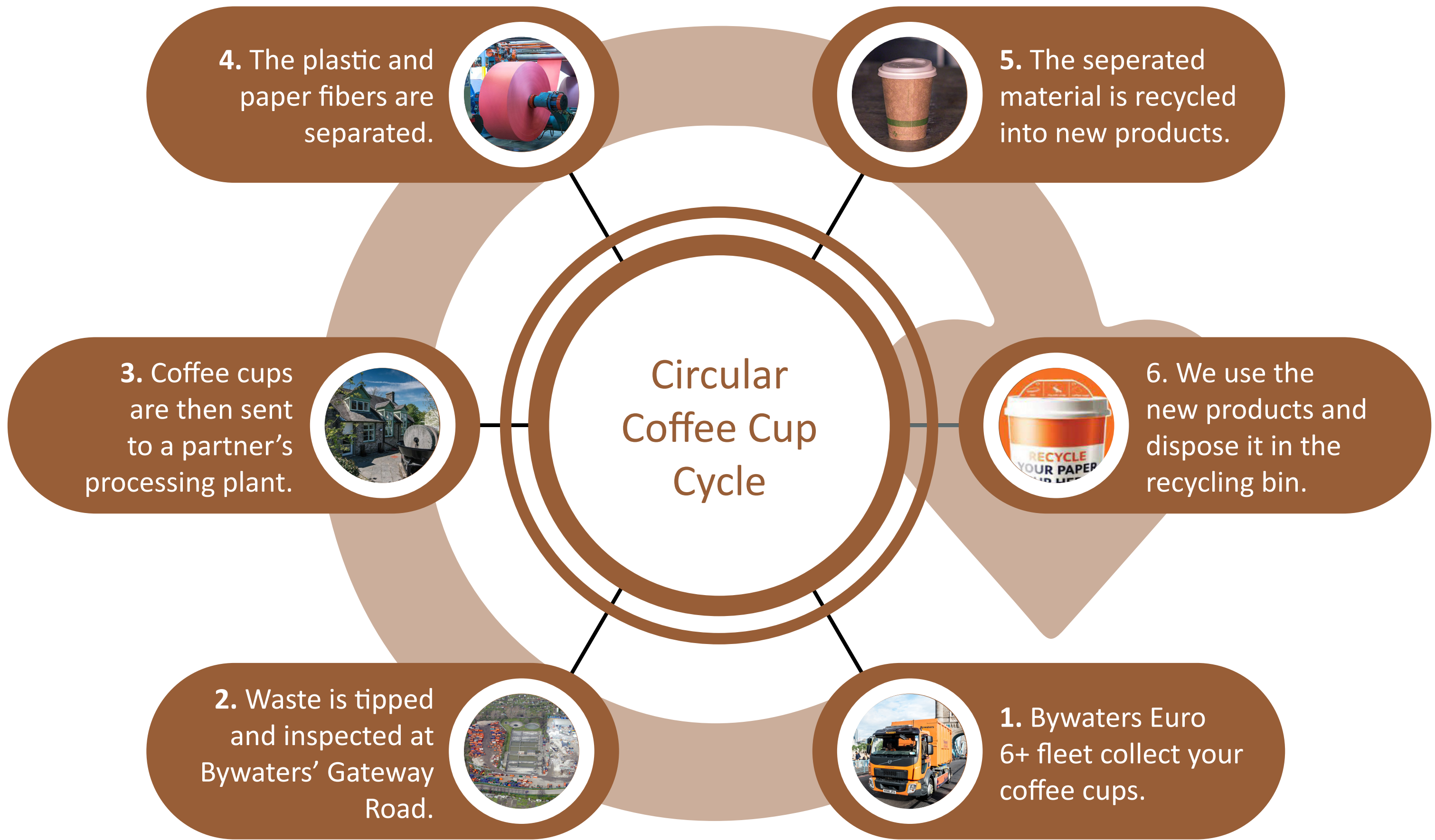
**Common items disposed of in the coffee cup waste stream**  
Coffee cups require a specialised waste stream to be properly recycled because they are made of composite materials, having a plastic polyethene lining inside the paper cup.

### Main contaminants

Biodegradable and compostable coffee cups and any residual drink left in the cups.

### Benefits of recycling

Recycling coffee cups in their designated stream ensures the DMR stream isn't contaminated and less waste is sent for incineration. Recycling coffee cups can help prevent deforestation, as the paper from the cup is recycled to make paper items such as notebooks.





## Circular Confidential Waste

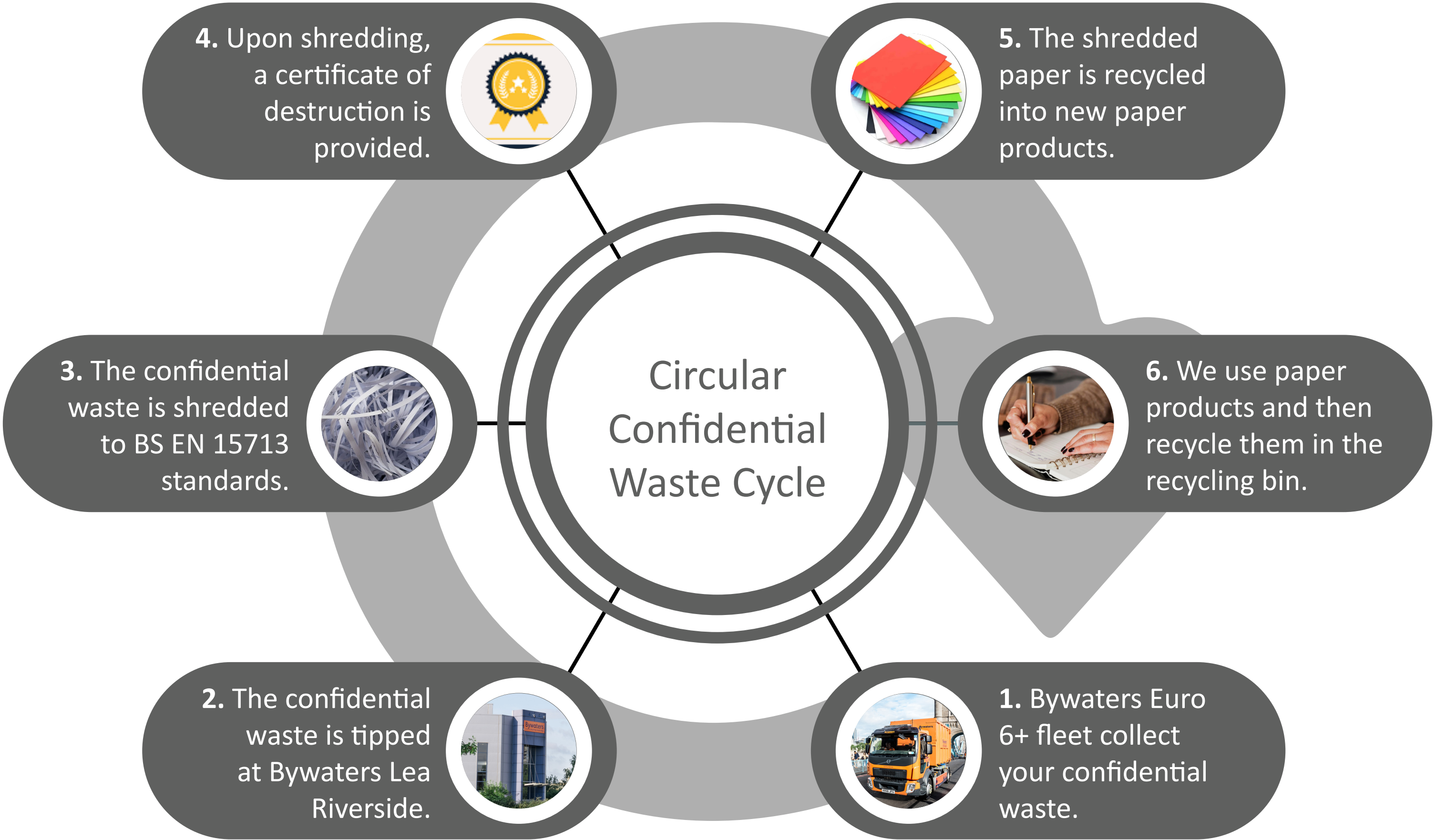
Common items disposed of in the confidential waste stream  
Only confidential paper waste goes into this waste stream.

### Main contaminants

Any other paper items which do not contain confidential information that could be safely disposed of in the DMR waste stream. The confidential waste stream does not accept metal folders, plastic wallets and clips, just the paper itself.

### Benefits of recycling

Securely disposing of confidential waste means the paper can be recycled and made into new paper items, rather than being incinerated.



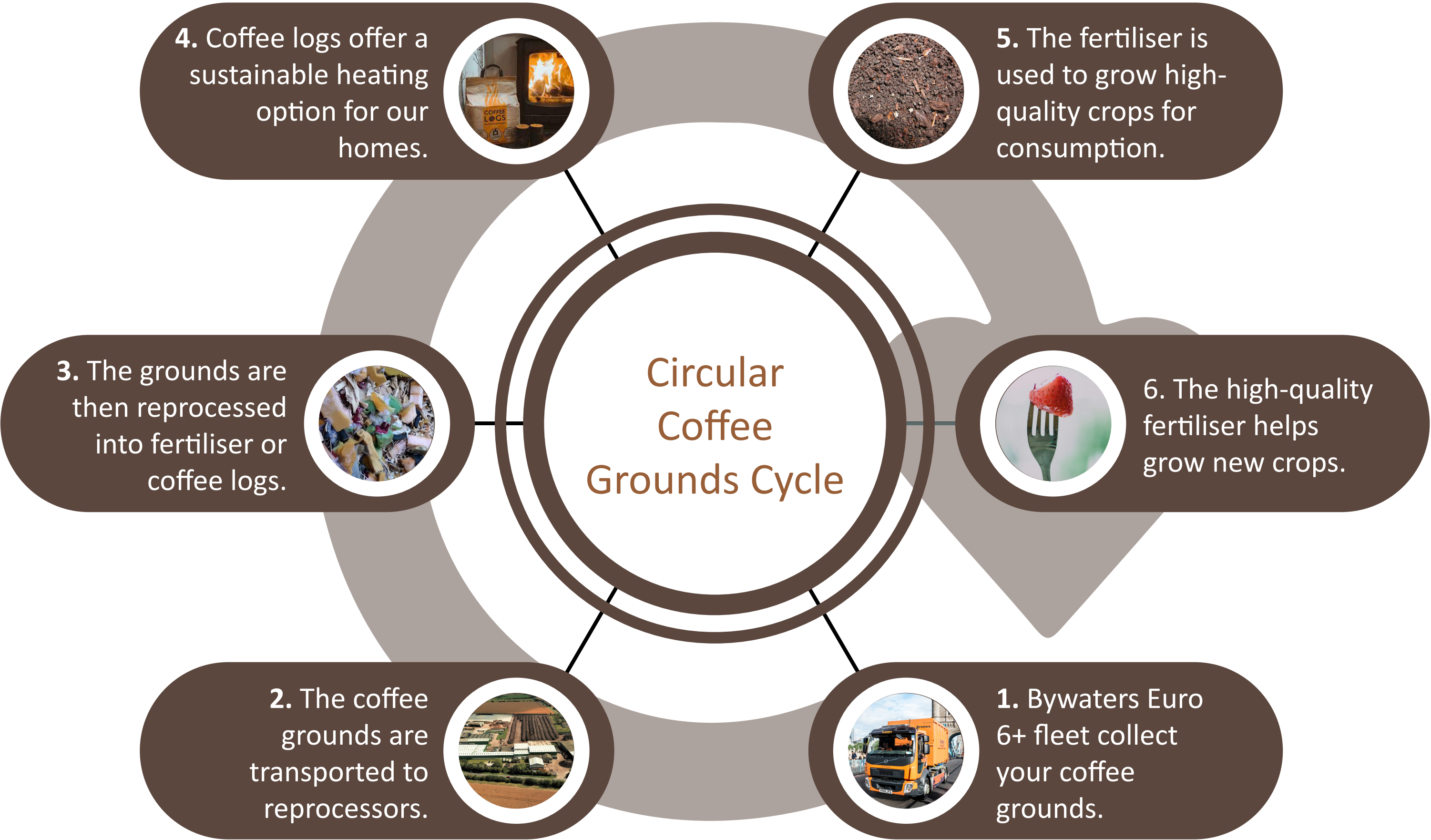


# Circular Coffee Grounds

Common items disposed of in the coffee ground stream  
Only coffee grounds would go in this stream.

Main contaminants  
Anything other than coffee grounds would be a contamination of this waste stream.

Benefits of recycling  
Landfilling coffee grounds leads to methane production, a greenhouse gas with a much greater impact on the environment than CO<sub>2</sub>. Recycling coffee grounds helps avoid these harmful emissions.





# Circular Hazardous Waste

**Common items disposed of in the hazardous waste stream**  
Cleaning products, paint thinners, mercury-containing items, fluorescent tubes and unemptied aerosol.

**Main contaminants**  
Anything that is not hazardous waste is a contaminant.

**Benefits of recycling**  
Recycling hazardous waste reduces pollution, conserves resources, and lowers energy consumption. It can also be cost-effective and create new economic opportunities in the green sector.





## Circular Battery

### Common items disposed of in the battery waste stream

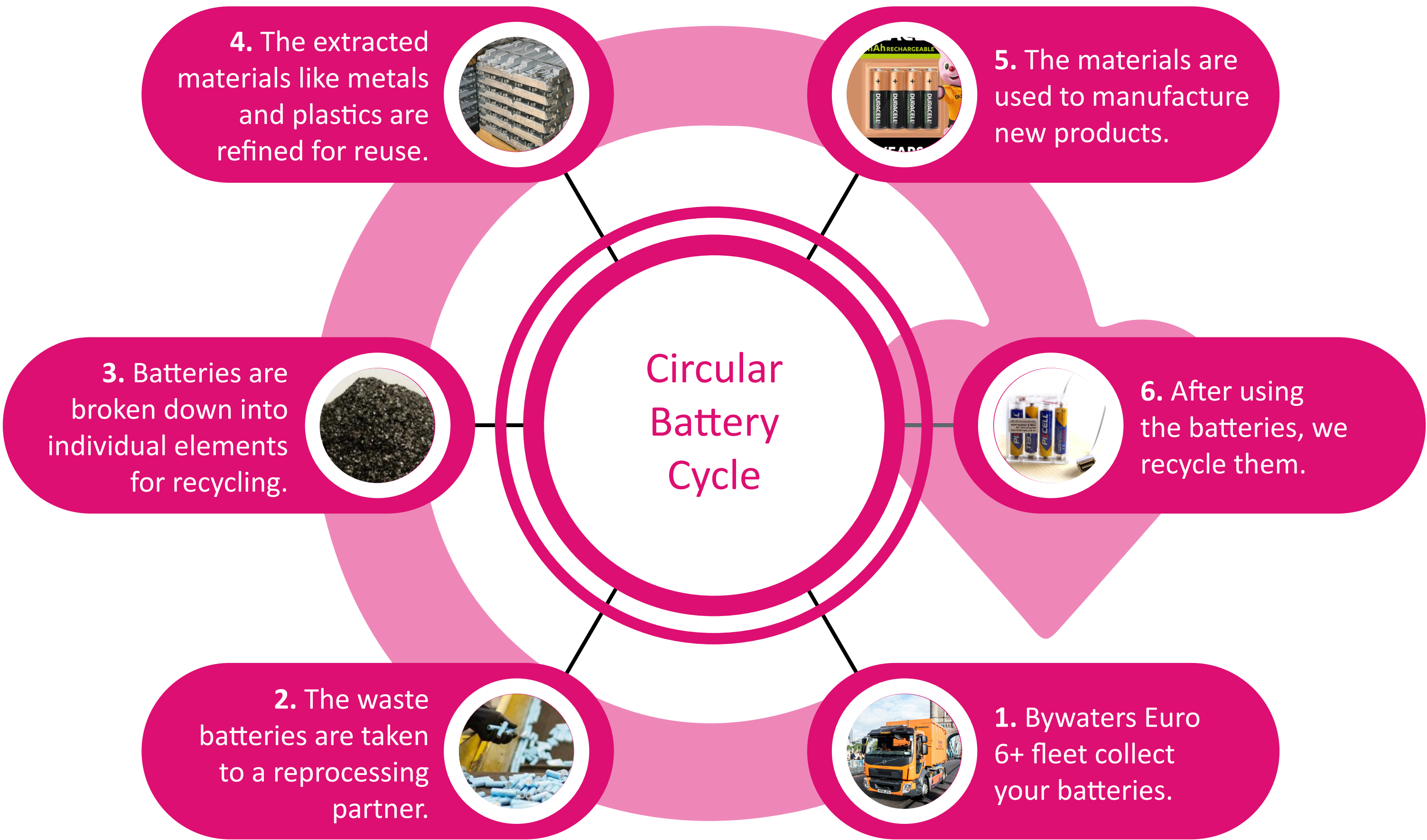
The Bywaters battery waste stream accepts all battery types, including ones that contain zinc, lithium, lead and nickel. Batteries are a fire hazard and one of the main causes of fire for many facilities, hence why it is important to handle, transport and store them correctly.

### Main contaminants

Any WEEE waste, vapes and non-battery items are considered a contaminant.

### Benefits of recycling

Responsibly recycling batteries ensures that the dangerous chemicals and materials they contain are not released into the environment. Recycling the materials contained in batteries also helps reduce the need to extract virgin natural resources and reduces CO<sub>2</sub> emissions.



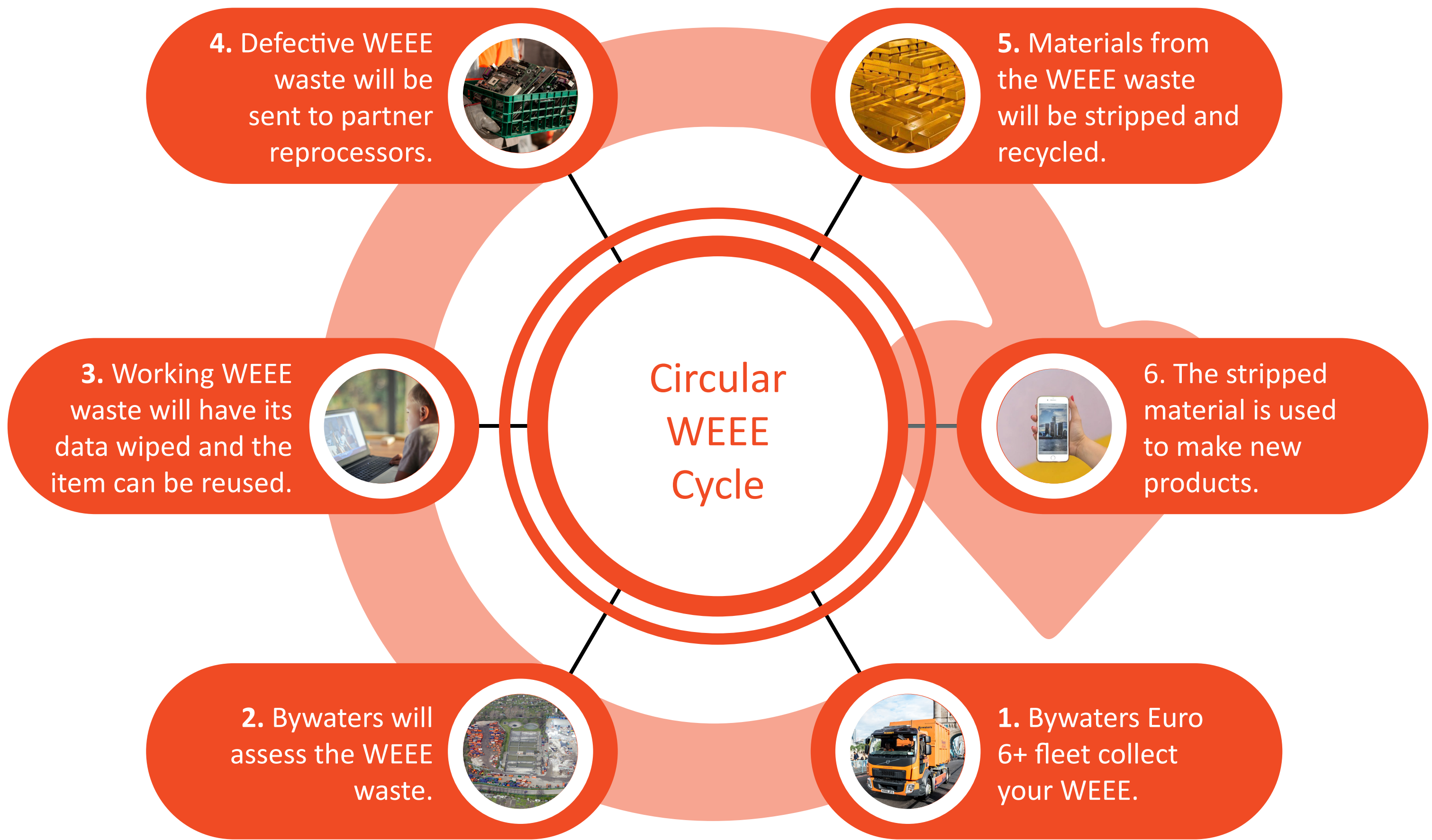


# Circular Waste Electrical and Electronic Equipment (WEEE)

**Common items disposed of in the WEEE stream**  
Any electrical and electronic item can go in this waste stream: computers, phones, large and small household appliances, lighting equipment, electrical power tools, medical devices and items such as smoke detectors.

**Main contaminants**  
Batteries require a separate waste stream, and anything that isn't electrical/electronic should not be disposed of in this waste stream.

**Benefits of recycling**  
Electrical and electronic equipment often contain precious metals. Recovering and reusing these from WEEE waste items means reducing the amount of virgin material that needs to be extracted. This helps conserve natural areas and resources and prevents the associated pollution of extraction.





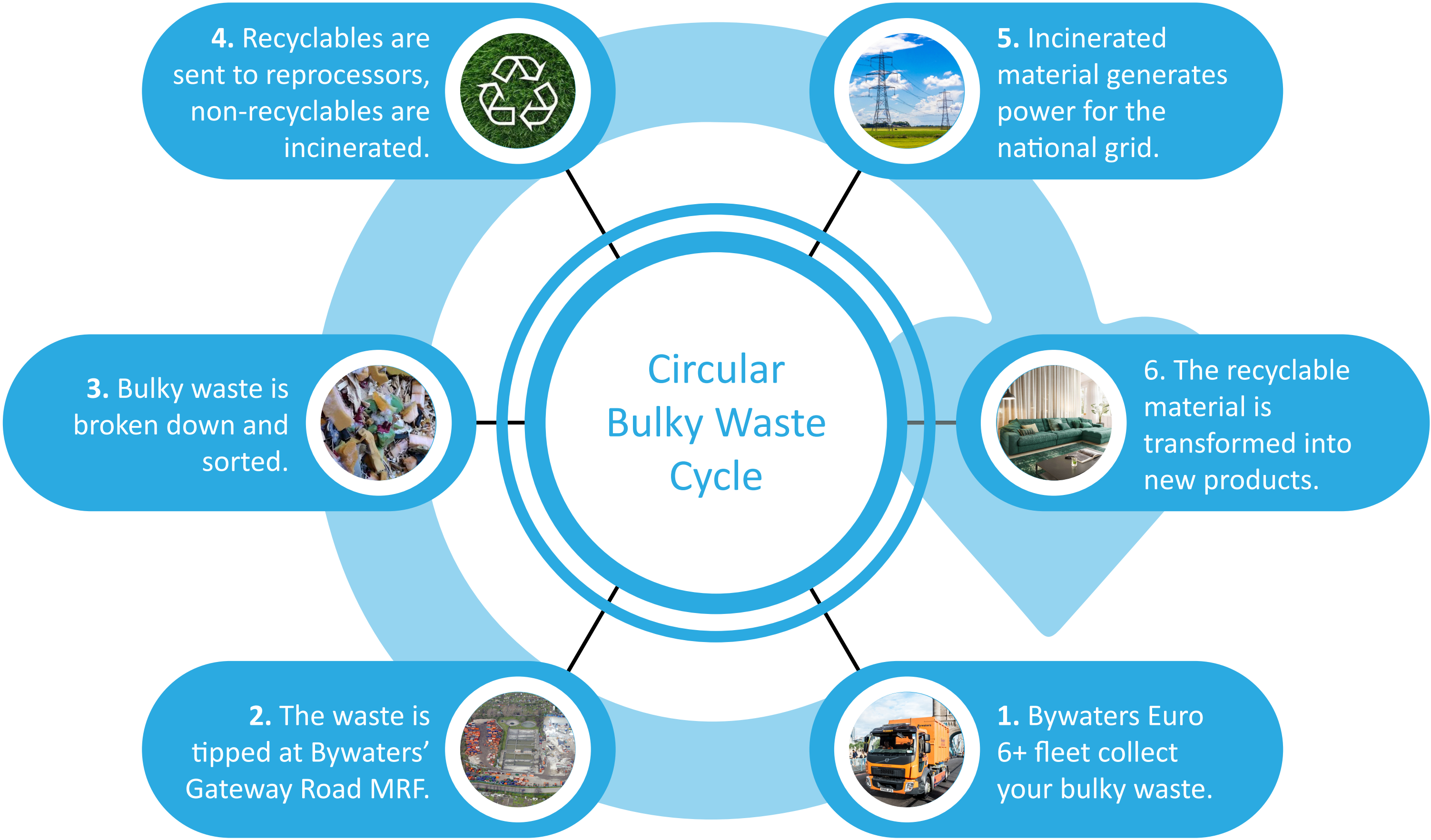
# Circular Bulky Waste

**Common items disposed of in the bulky waste stream**  
Furniture not containing POPs (no padding or textiles), and large recyclable items.

**Main contaminants**  
WEEE waste, batteries, white goods and hazardous waste are all contaminants to the bulky waste stream.

In case you need to dispose of mattresses and furniture containing POPs, please speak to our team.

**Benefits of recycling**  
Bywaters client base has donated over £500,000 worth of reused materials, which has saved over 200,000kg of CO<sub>2</sub> emissions.





# Circular Cooking Oil

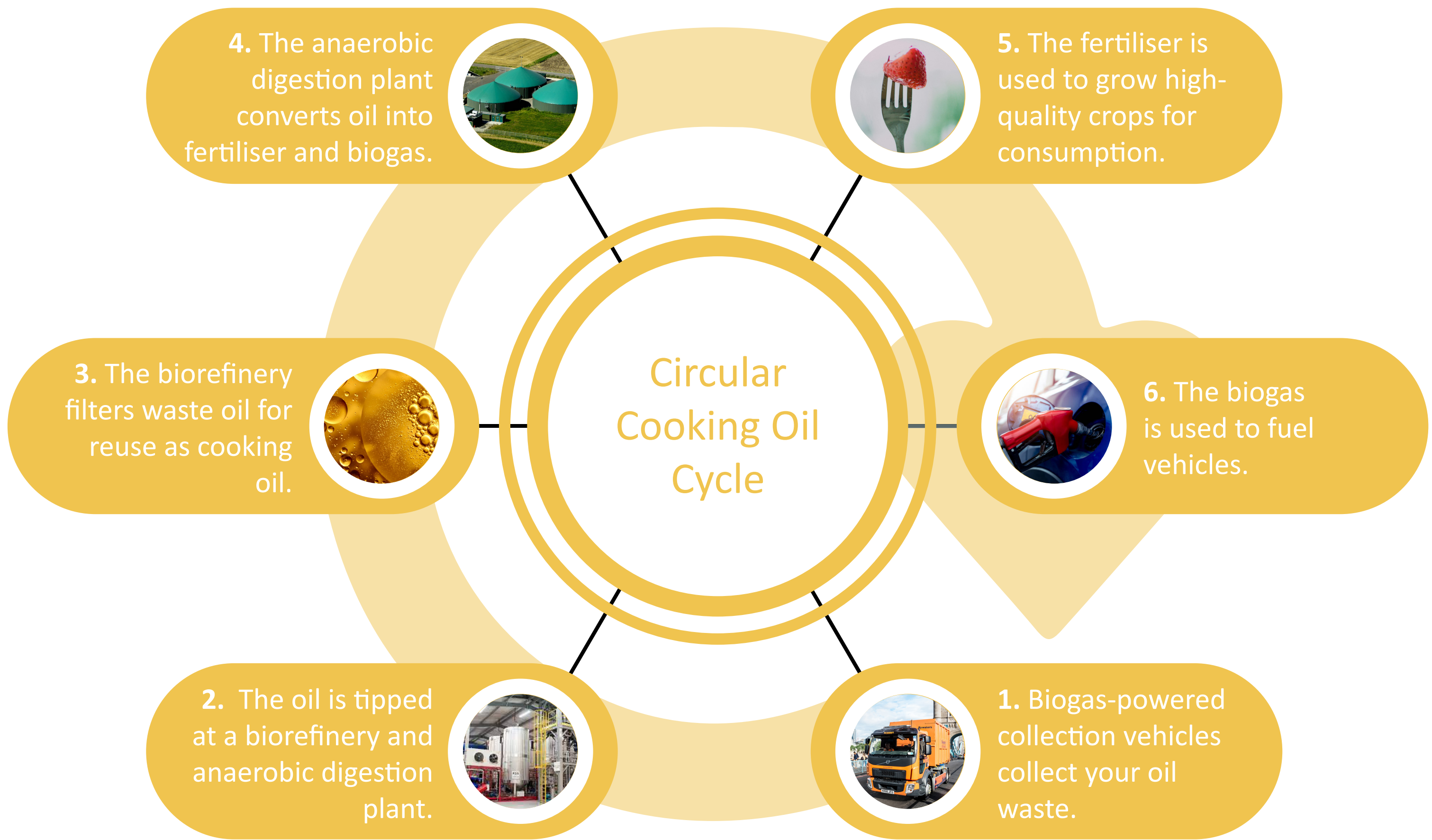
Common items disposed of in the cooking oil waste stream  
Only cooking oil would go in this stream.

Main contaminants

Fragments of food, water and other liquids which are not oil.

Benefits of recycling

Responsibly handling and recycling oil keeps it from polluting the environment, and blocking drains. It also requires less energy to clean it than to produce virgin material.





# Circular Construction Waste

Common items disposed of in the construction waste stream

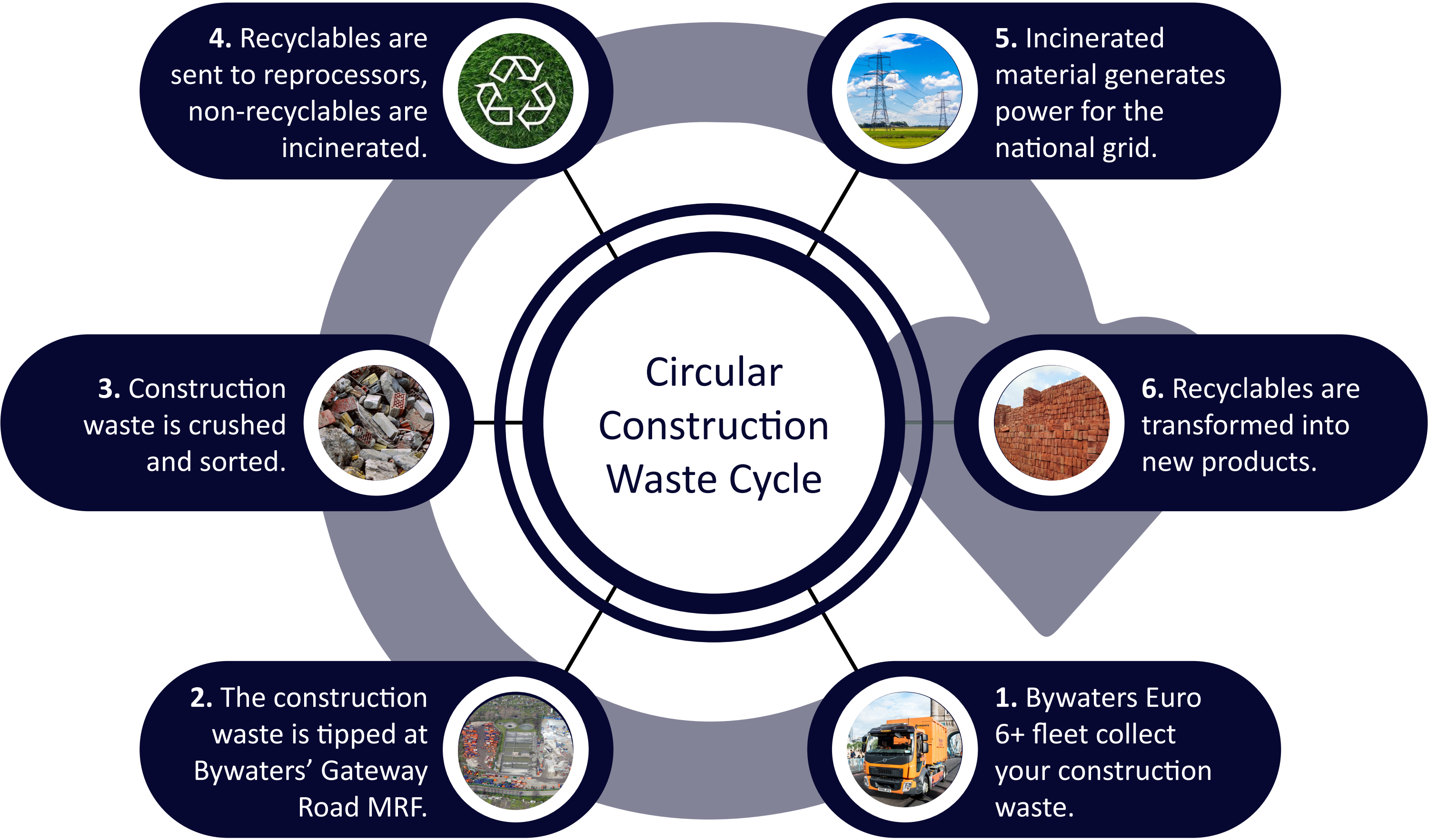
Common construction waste includes concrete, bricks, tiles, ceramics, wood, glass, plastic, soil, stones and dredging materials.

Main contaminants

Hazardous waste, food waste, plasterboard and electronic waste.

Benefits of recycling construction waste

Recycling construction waste is a sustainable practice with environmental and economic benefits. It reduces landfill use, conserves natural resources, and lowers greenhouse gas emissions. Recycling can also be cost-effective and create new business opportunities. Overall, it promotes a more sustainable construction industry.





# Tips & Tricks to Boost Your Recycling Rate



## Remove under desk bins

We encourage the removal of under-desk bins, as they do not promote the proper segregation of the different waste streams. Having individual bins creates unnecessary extra waste of bin liners and work for the cleaning staff.



## Introduce a centralised bin system

A centralised bin system will ensure better segregation of waste and more efficient use of the bins.



## Use clear bin bags

Using clear bags allows for simple and quick identification of the contents both onsite and at our MRF. It can help prevent avoidable Health & Safety incidents for cleaning and portering staff, such as identifying sharp objects in the bags before they cause injuries.



## Switch to reusables

Reducing the amount of single-use items can greatly decrease the amount of waste produced at a site. In most cases, this switch can be done quite easily.



## Collections

Ad hoc collections offered by Bywaters are flexible pickups for specialised waste streams like bulky items, WEEE (Waste Electrical and Electronic Equipment) and confidential waste materials. These waste types typically don't require regular collections.





## Services Provided by Bywaters Sustainability Team

Think of our sustainability team as experts who are there to consult you on any sustainability-related matter that could help your business increase recycling rates or lower its carbon footprint. At Bywaters, we're fully committed to sustainability. That's why each of our clients is assigned a dedicated sustainability expert as part of our service.

Whether you're a boutique café owner or a Fortune 500 powerhouse, your sustainability expert will help you minimise your company's environmental impact and keep costs down.



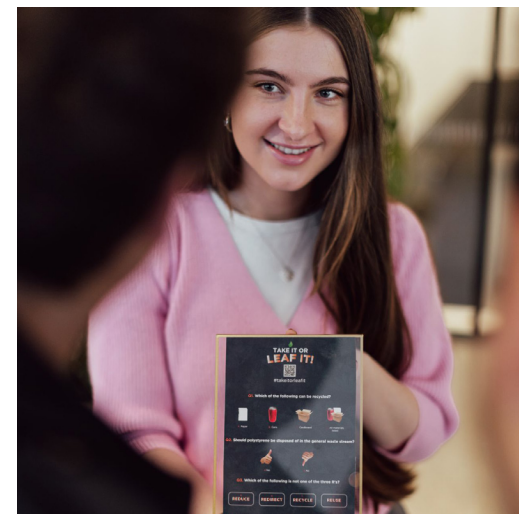
### Audits

Our sustainability team audits your waste streams, recommends improvements and tailors a waste strategy for you.



### Reporting

BRAD, our online platform, offers transparency into your waste data, including a recycling performance rating and actionable insights to help you improve your recycling.



### Training

Level up waste management! Bespoke staff training & 'Train the Trainer' empower long-term impact, ideal for sites and businesses with high turnover.



### Signage

Recycle right every time. Our posters simplify sorting with colour-coded and clear instructions, as well as images. Customisable for any space and language.



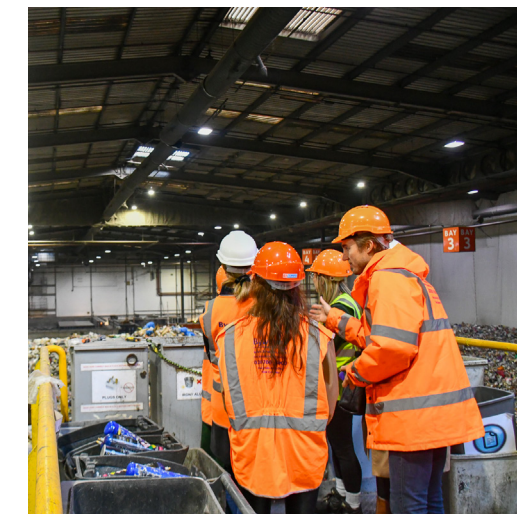
### Waste Awareness Days

Learn by doing with Waste Awareness Days! Gain hands-on experience through engaging activities including sorting challenges and VR tours. Join and build sustainable habits.



### Volunteering and community-building opportunities

Clean up communities, fight food waste! Join our diverse volunteer projects: litter picks, beach cleans, and supporting charities.



### Facility visits

Go behind the scenes! Take a guided tour of our Material Recovery Facility (MRF) and see how your waste gets a second life. Learn sustainable disposal tips firsthand.



### Sustainability webinars

Go green by joining our quarterly webinars! Learn about sustainability, engage with experts, and drive positive change in your facility.