

2nd edition

Bywaters

recycling made easy

Education Waste Management



**Creating a zero-waste culture and maximising
resource recovery in educational settings.**

www.bywaters.co.uk
enquiries@bywaters.co.uk
020 7001 6000

Offering a range of waste management solutions to educational institutions of all sorts

We deliver sustainable waste management services to some of the UK's most prestigious educational institutions, while reducing their costs and enhancing the sustainability of their portfolios.

When dealing with educational institutions, such as schools and universities, facility managers require a provider that can handle any type of waste. At Bywaters, we ensure that nothing we collect goes to landfill, and our state-of-the-art facilities in East London are expertly equipped to sort all varieties of waste for recycling and recovery.

Who are Bywaters?

Bywaters is London's leading sustainable waste management company. We send zero waste to landfill and work closely with our clients to increase their recycling rates and improve overall sustainability, reducing both costs and emissions at the same time. Whatever your waste management needs, we have the experience to help you enhance your sustainability.

Bywaters is more than a recycling company. Our vision is to lead the UK to a sustainable future, and everything we do is founded upon our commitment to improving the environment. Our team of sustainability executives work in partnership with our clients to have an instant impact, and we are always enhancing our own operations to reduce our own carbon footprint – whether that's by adding more electric vehicles to our fleet, or installing the 4,000 solar panels that power our facility in Bow.

Some of our customers:



We also give our clients access to our tailor-made BRAD reporting platform, which stores all of their waste data in one place.

This allows customers to track their environmental performance, including data on the total waste produced, how much was recycled, and the CO2 savings made.

Our Green Team are available to provide consultancy and support to help reduce emissions and increase sustainability. This is in addition to training and engagement sessions for all sorts of stakeholders, including students, educators and other staff.





Education Partners



Queen Mary University

Queen Mary University of London boasts a prestigious history, dating back to 1785. Part of the esteemed Russell Group, it's a hub for world-class research and education. Across its beautiful campuses, Queen Mary offers a vibrant student experience with cutting-edge facilities, preparing students to become the next generation of innovators.



Stratford School Academy

Nestled in the heart of East London, Stratford School Academy is a vibrant secondary school (ages 11-16) located in the heart of Newham. Founded in its current form in 2014, it builds upon a rich educational legacy. Their modern facilities and dedicated staff provide an inspiring learning environment, fostering excellence and inclusivity for all students.



London School of Economics

The London School of Economics and Political Science (LSE) is a world-class university founded in 1895. Specialising in social sciences, LSE offers a global perspective on tackling world issues. Renowned for its research excellence, LSE fosters a vibrant learning environment in its central London location.



Forest School

Steeped in tradition since 1834, Forest School is a co-educational independent day school for ages 4-18. Nestled on a spacious campus with historic buildings, it offers a nurturing environment that fosters academic excellence alongside personal growth.

Our services

Following the waste hierarchy, which prioritises Reduce, Reuse, Recycle, and Recover, we ensure all waste we process contributes to a sustainable future for both us and the planet.

REDUCE

Championing waste reduction, our sustainability executives empower you to make a real environmental impact. We prioritise reduction, the top of the waste hierarchy, to help you tackle overconsumption and excessive consumerism through engaging initiatives like waste audits, staff training, awareness days, and beach cleanups. These efforts support you in reducing and offsetting your carbon footprint, while also contributing to cost savings for your facility or property.

REUSE

By diverting reusable items from the waste stream, we give them a second life. We partner with various charities and businesses to find new homes for your unwanted items, preventing the extraction of virgin materials and reducing the carbon footprint associated with manufacturing new products. This helps sustain the environment for future generations, saves money, reduces the amount of waste needing to be recycled or sent to landfills, and allows products to be used to their fullest extent.

RECYCLE

At Bywaters, recycling is at the core of what we do. Our facilities sort hundreds of thousands of tonnes of waste for recycling annually. We offer comprehensive services for all recyclables, from various glass grades to hazardous and confidential materials. Committed to responsible waste management, we ensure no waste goes directly to landfills. Whether you need a complete solution or just want to recycle specific materials, Bywaters is your one-stop shop.

RECOVER

Bywaters have a zero waste direct to landfill policy. All non-recyclable waste collected by Bywaters' trucks is instead sent for recovery at Energy from Waste (EfW) facilities in London. Waste is incinerated at these facilities, and the resulting energy is used to generate electricity that helps power the UK's capital. This is the most sustainable way to handle both non-recyclable waste and a large percentage of clinical waste.

Total waste management

We offer comprehensive waste management and recycling solutions for all industries, from small businesses like kebab shops to large venues like the O2 Arena. Our services encompass handling waste from its initial generation to its final disposal.



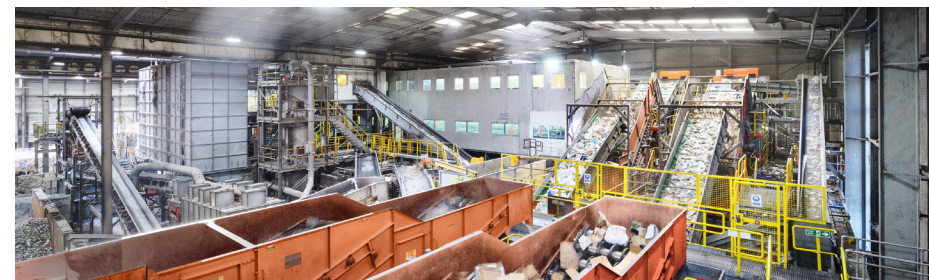
Waste collection: This involves gathering waste from businesses and industries.

Waste transportation: Once collected, the waste is transported to facilities for further processing.

Waste sorting and separation: At the facilities, waste is sorted into different categories such as paper, plastic, metal, glass...

Waste recycling: Recyclable materials are processed and sent to other facilities to be converted into new products.

Waste disposal: Bywaters sends zero waste direct to landfill. Waste that cannot be recycled is sent for incineration.



What happens to your waste in Bywaters MRF

Operating within a vast space in East London, Bywaters 24/7 operations are a hub of activity. A constant flow of material from all over the UK is tipped in the impressive facility, which makes up London's largest undercover MRF. Capable of processing up to 650,000 tonnes of material a year, recovering over 95% to be recycled.

Once your waste is tipped, it is greeted by Bywaters friendly staff for inspection. Contaminated waste and non-recyclable waste is separated from the recyclable material and siloed to produce energy from waste. To reduce emissions, the waste is transported to the incinerator via barge.

After the inspection is complete, your waste is collected by 'the grab'. An automatic material picking machine that scoops bulk material and deposits it into two large rotating bag splitters, to remove any excess packaging.

Before your waste goes through a wild journey of spinning discs, speeding conveyor belts, infrared lasers and whirling magnets. Bywaters employees remove non-recyclable waste at the presort cabin, as well as any other residue that could obstruct the efficient processing of the dry recyclables.

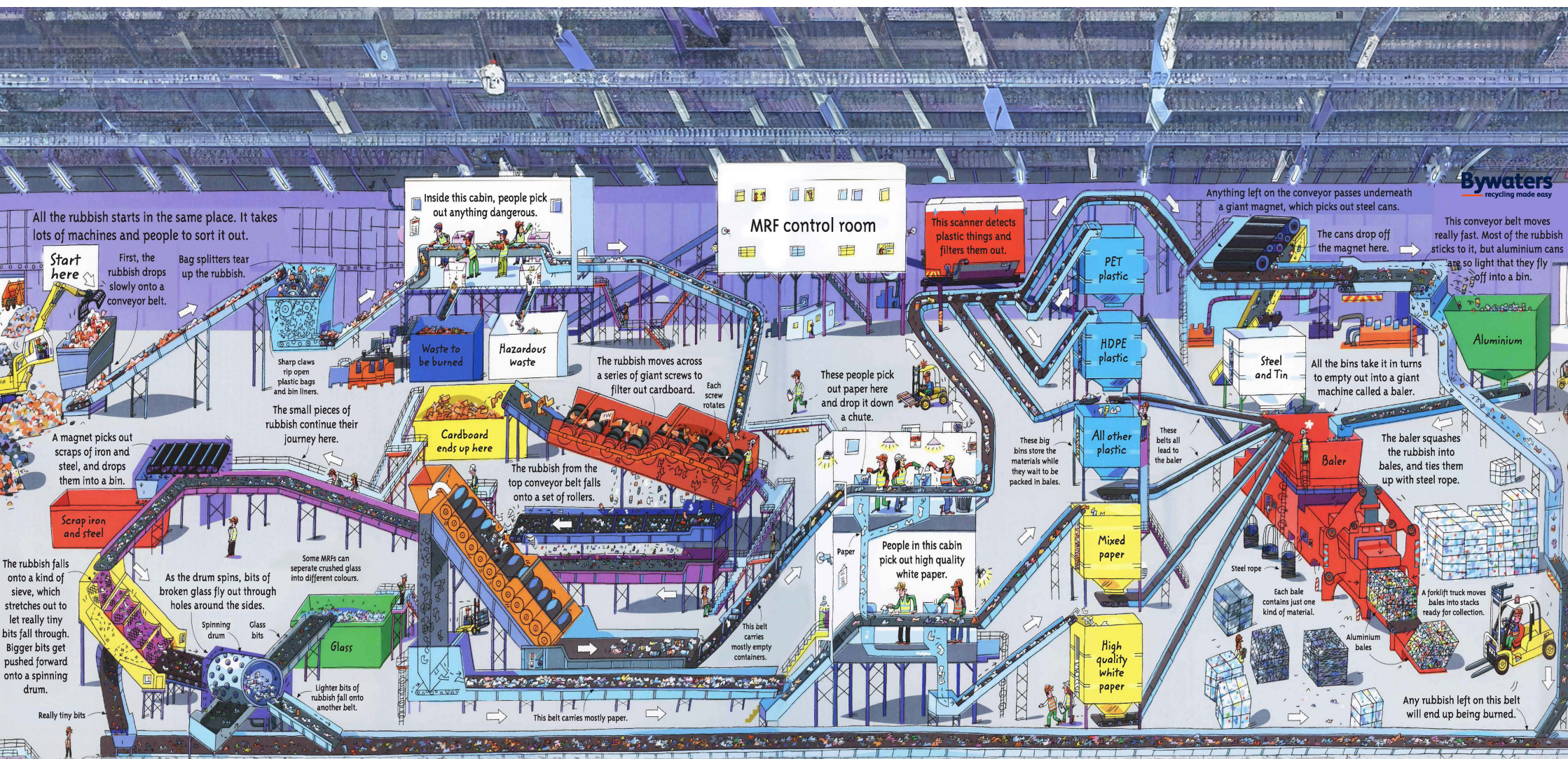
Bywaters state-of-the-art equipment works in harmony, taking mixed recyclables like metals, plastics and glass and sorting them to be turned into new products like cans, bottles and notepads.

Flying out of the cabin, the mixed recyclables speed on to a series of large screens designed to separate waste based on shape. First, an OOC (old corrugated cardboard) screen consisting of numerous giant rotating axles/gears simultaneously sorts large pieces of cardboard whilst extracting fine material to be used as aggregate in many local building projects.

A second screen is aligned at a steep 45-degree angle, the gyrating screws help separate 3D and 2D items. 2D items gain traction, climbing up the polishing screen to a final sorting cabin where the paper is sorted based on quality – whilst 3D items tumble down the screen in a spinning whirl of colour, leaving just plastics and metals to be separated.

Trundling along the conveyor belt, the 3D materials, mainly consisting of plastic and metal drinks containers, travel toward the high-tech "triple-level near-infrared optical sorting system". Using infrared lasers to read the material's chemical makeup, plastics are shot with a jet of air throwing them into the required silo, ensuring HDPE, PET and any other plastics are kept separate. An overband magnet attracts ferrous metals whilst an eddy current simultaneously repels non-ferrous metals like aluminium, sorting the materials ready to be baled.

The siloed materials are compressed and baled into blocks that can weigh up to 700kg. The baled material, which can be up to 99% pure, is sent to reprocessors, where it is cleaned and processed into brand new products that can be sold and reused, starting the process again.



All the rubbish starts in the same place. It takes lots of machines and people to sort it out.

Start here

First, the rubbish drops slowly onto a conveyor belt.

Bag splitters tear up the rubbish.

The small pieces of rubbish continue their journey here.

A magnet picks out scraps of iron and steel, and drops them into a bin.

Scrap iron and steel

The rubbish falls onto a kind of sieve, which stretches out to let really tiny bits fall through. Bigger bits get pushed forward onto a spinning drum.

Really tiny bits

As the drum spins, bits of broken glass fly out through holes around the sides.

Spinning drum

Glass bits

Some MRFs can separate crushed glass into different colours.

Lighter bits of rubbish fall onto another belt.

Glass

Inside this cabin, people pick out anything dangerous.

Waste to be burned

Hazardous waste

The rubbish moves across a series of giant screws to filter out cardboard.

Each screw rotates

Cardboard ends up here

The rubbish from the top conveyor belt falls onto a set of rollers.

This belt carries mostly paper.

MRF control room

These people pick out paper here and drop it down a chute.

People in this cabin pick out high quality white paper.

Paper

This scanner detects plastic things and filters them out.

PET plastic

HDPE plastic

All other plastic

These big bins store the materials while they wait to be packed in bales.

Mixed paper

High quality white paper

Anything left on the conveyor passes underneath a giant magnet, which picks out steel cans.

The cans drop off the magnet here.

Steel and Tin

All the bins take it in turns to empty out into a giant machine called a baler.

The baler squashes the rubbish into bales, and ties them up with steel rope.

Steel rope

Each bale contains just one kind of material.

Aluminium bales

A forklift truck moves bales into stacks ready for collection.

Aluminium

Any rubbish left on this belt will end up being burned.

Bywaters
recycling made easy



Teaching our Future Generations about sustainable waste practices

The best way to encourage better recycling practices is education – and through providing up-to-date and engaging information about waste management to children we can ensure that the next generation have the necessary knowledge to create a more sustainable future.

In order to achieve this goal, we hold regular tours of our specialist materials recovery facility in Bow for school groups from across London. Due to company health and safety policies only adults can enter the facility itself, so we host school visits in our adjacent head office and use our state-of-the-art virtual reality headsets to give them an interactive digital tour – devices which we also use as part of our regular waste awareness days for clients.

These educational visits are led by jointly by our Green Team. In addition to the virtual reality headsets, we play a variety of educational games such as quizzes about what is and is not recyclable – along with the most sustainable ways to handle non-recyclable waste – and a 'speed-sorting' challenge with prizes for the fastest team.



Bywaters' School Outreach Initiatives

In addition to holding tours and talks for school groups at our facility, our team regularly goes out and visits schools to teach bespoke lessons or hold assemblies. We're passionate about our 'London for London' ethos, and doing what we can to educate the capital's children is a key part of our approach.

Bywaters visited over 10 schools across Thurrock in order to engage children with environmental issues. This saw us reach over 2,500 children within a couple of months.

Part of our sessions involve explaining how recycling works, including what happens to all the waste from the school once it has been collected, giving the children a simplified explanation of how our materials recovery facility works.

To keep these presentations fun, understandable and engaging, we devise fun ways for them to learn what happens to their rubbish and why it's so important to put things in the right bin. These sessions start with an interactive introduction about recycling, getting the children to answer questions such as 'What is recycling?' and 'Why should we recycle?'. This is followed by competitive guessing games to maintain engagement through gamified questions.

Bywaters' vision is to lead the UK to a sustainable future, and the best way to achieve this is to inspire the next generation. Teaching London's children about sustainability and responsible waste management is a privilege we take seriously, and from what we've seen there is definitely hope for the future.



Sustainability Tips for the Education Sector

1. Conduct A Waste Audit

A waste audit is a systematic assessment of an organisation's operations to inspect the amount and types of waste produced. Recycling specialists like Bywaters can help in conducting these to analyse current waste practices and how they can be improved.

2. Centralise Your Bins

Personal bins discourage standardising waste segregation. Implementing centralised bins is an effective strategy for improving waste sorting.

3. Clear Signage

Make sure you have clear signage that clarify where to dispose specific waste, so that litter is sorted correctly.

4. Engage Your Building

Train your staff to engage your building with proper recycling practice. Create student-led recycling clubs to promote recycling and waste reduction initiatives.

5. Switch To Reusables

Switch to reusables from single-use items to generate less waste, such as with cafeteria cutlery and water bottles.

6. Reuse Partners

From furniture to class equipment, reuse organisations can also supply items while providing circular solutions to resource management.

7. Reuse Extended Producer Responsibility (EPR)

Work with organisations with Extended Producer Responsibility (EPR) programmes for a more responsible lifecycle of the products you use.

8. Use Eco-Friendly School Supplies

From recycled paper to refillable items, many eco-friendly supplies are reusable or made from recycled materials, minimising landfill waste.

9. Leverage Compaction Equipment

By using state-of-the-art compaction equipment, you can to reduce space use and collections, as well as ensure that your waste is handled sustainably. From cardboard balers to the POD, Bywaters' equipment is tailored to all sorts of recycling needs.

10. Work With Sustainable Professionals

By working with sustainable recyclers like Bywaters, you ensure that all aspects of your waste management are handled as sustainably as possible.



CASE STUDY



Waste Hierarchy: Engaging Communities

Introduction

Just a stone's throw away from us, Bow School stands as one of the largest educational institutions in Tower Hamlets. As one of the winners of the Builders Future Fund, Bow School exemplifies commitment to a better tomorrow. At Bywaters, we're passionate about engaging our community with a sustainable approach.

The Task

We wanted to procure our neighbour with the infrastructure to improve recycling, as well as educate its stakeholders about recycling. Studies have shown that over 65% of young people are visual learners. Therefore, the more bins available, the more chance items will be recycled appropriately.

We previously utilised our circular approach to provide Bow School with an estimated £1,500 worth of desks and chairs in 2022. This was also to show how reusing items reduces our costs and carbon footprint.

We originally wanted to deliver 20 bins to improve recycling accessibility. However, a major client in Central London provided us with excess Bywaters-branded bins. We wanted to use this opportunity to engage Bow School's pupils with the waste hierarchy and circular model again.



The Solution

We applied Waste Hierarchy principles by refurbishing and donating 20 colour-coded bins to Bow School. Saving them over £1,000 to advance our common sustainability cause.

Coupled with this sustainable approach, we delivered these in our electric vehicle, which is a part of our increasingly electrified fleet. The trip saved just under 1 kg of CO2 emissions for the 30 minute drive between sites when compared to a normal van, roughly the same as the average weekly carbon footprint of a single smartphone.

The Meaning Of This Initiative

By doing all of this, we set an example for all community stakeholders for maximising sustainable operations. Company initiatives shouldn't just be about upholding our own credibility as brands. It should also be about making sure the example you set encourages others to follow better practices.

We regularly engage Bow School's +1,000 pupils with recycling. We hold recycling seminars to encourage sustainability among new students and staff, as well as beach cleans. This is part of our commitment to both our community and sustainability.

We sincerely thank Bow School for their commitment, as we all strive towards a circular economy.

CASE STUDY

Bywaters' Summer Internship Programme

Introduction

At Bywaters, our commitment to sustainability drives us to support the next generation of environmentally conscious professionals. Through our Summer Internship Programme, we aim to equip young talent with essential skills to address climate challenges, aligning with the United Nations Sustainable Development Goals (SDGs), including Quality Education (SDG 4), Decent Work and Economic Growth (SDG 8), and Climate Action (SDG 13). This initiative not only provides meaningful work experience but also contributes to global sustainability goals.

Empowering Future Sustainability Professionals

Our internship programme serves two key purposes: empowering young professionals with the green skills essential to combat climate change and offering valuable work experience. In light of increasing demand for sustainability expertise, particularly in waste management, we see it as our duty to contribute to the development of these competencies in future generations.

Key Internship Responsibilities

The intern played a critical role in supporting our sustainability team on one of our largest contracts, the Wimbledon Championships. Their primary responsibility was producing a detailed report to help improve sustainability practices at future events. They documented activities and identified areas for enhancement to ensure future sustainability improvements.

Key Activities and Contributions

Pre-Event Site Visits: The intern conducted site visits to ensure preparations aligned with sustainability goals.

Staff Training: They delivered training to on-site staff on best practices for waste management and recycling.

On-Site Support: During the event, they monitored compliance with sustainability standards and gathered feedback for future improvements.

Delivering Tangible Results

The intern exceeded expectations by delivering a comprehensive report, focusing not only on infrastructure but also on the human aspect of waste management. Their proactive approach and innovative recommendations demonstrated their deep commitment to sustainability and improving recycling practices.

Growth and Community Impact

We provided a supportive learning environment, offering the intern full exposure to our operations and encouraging them to take initiative. Their contributions have positively impacted Wimbledon's sustainability practices, setting a standard for future events. Additionally, the experience provided them with tangible skills and achievements to showcase in their career.

Future Expansion Plans

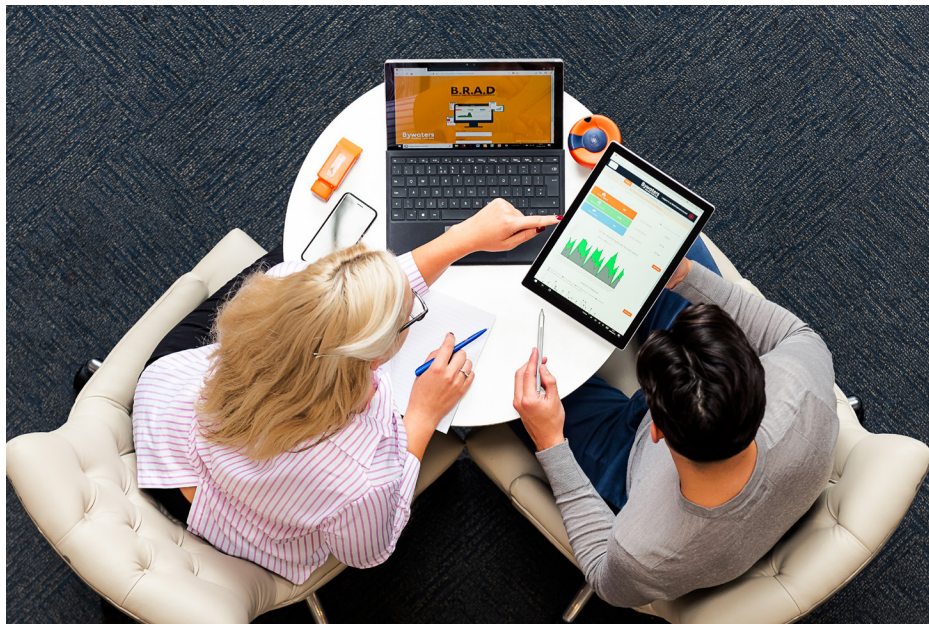
We plan to grow the internship programme by partnering with educational institutions, offering more students hands-on experience. By nurturing future green leaders, we aim to drive positive environmental change in the community.

Bywaters

recycling made easy



BRAD



Bywaters Reporting Analytics Dashboard (BRAD)

Bywaters clients can monitor their environmental performance in real time with our bespoke reporting tool, the Bywaters Reporting Analytics Dashboard (BRAD). Through this specialised platform, all our clients can access their waste management and recycling data at the touch of a button.

The Bywaters Reporting Analytics Dashboard allows you to find and download all information about your business' waste management, in a variety of formats to make everything easily digestible. Using BRAD, you can access your recycling data, contracts, compliance documentation, CO2 emissions information, waste transfer notes (WTNs), monthly reports, invoices, complete service history, and more.



Bywaters
recycling made easy

WE THINK IT'S TIME FOR CHANGE DO YOU?



www.bywaters.co.uk | 020 7001 6000 | enquiries@bywaters.co.uk

Sustainability Executives & Activities

Think of our Sustainability Team as experts who are there to consult you on any sustainability related matter that could help your business increase recycling rates or lower its carbon footprint. At Bywaters, we're fully committed to sustainability. That's why each of our clients is assigned a dedicated sustainability expert as part of our service.

Whether you're a boutique café owner or a Fortune 500 powerhouse, your sustainability expert will help you minimise your company's environmental impact and keep costs down.



Audits
Our sustainability team audits your waste streams, recommends improvements, and tailors a waste strategy for you.



Waste Awareness Days
Learn by doing with Waste Awareness Days! Gain hands-on experience through engaging activities including sorting challenges and VR tours.



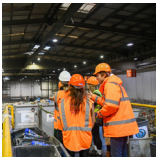
Reporting
BRAD, our online platform, offers transparency into your waste data, including a recycling performance rating and actionable insights to help you improve your recycling.



Volunteering and community building opportunities
Clean up communities, fight food waste! Join our diverse volunteer projects: litter picks, beach cleans, and supporting charities.



Training
Level up waste management! Bespoke staff training & "Train the Trainer" empower long-term impact, ideal for sites and businesses with high turnover.



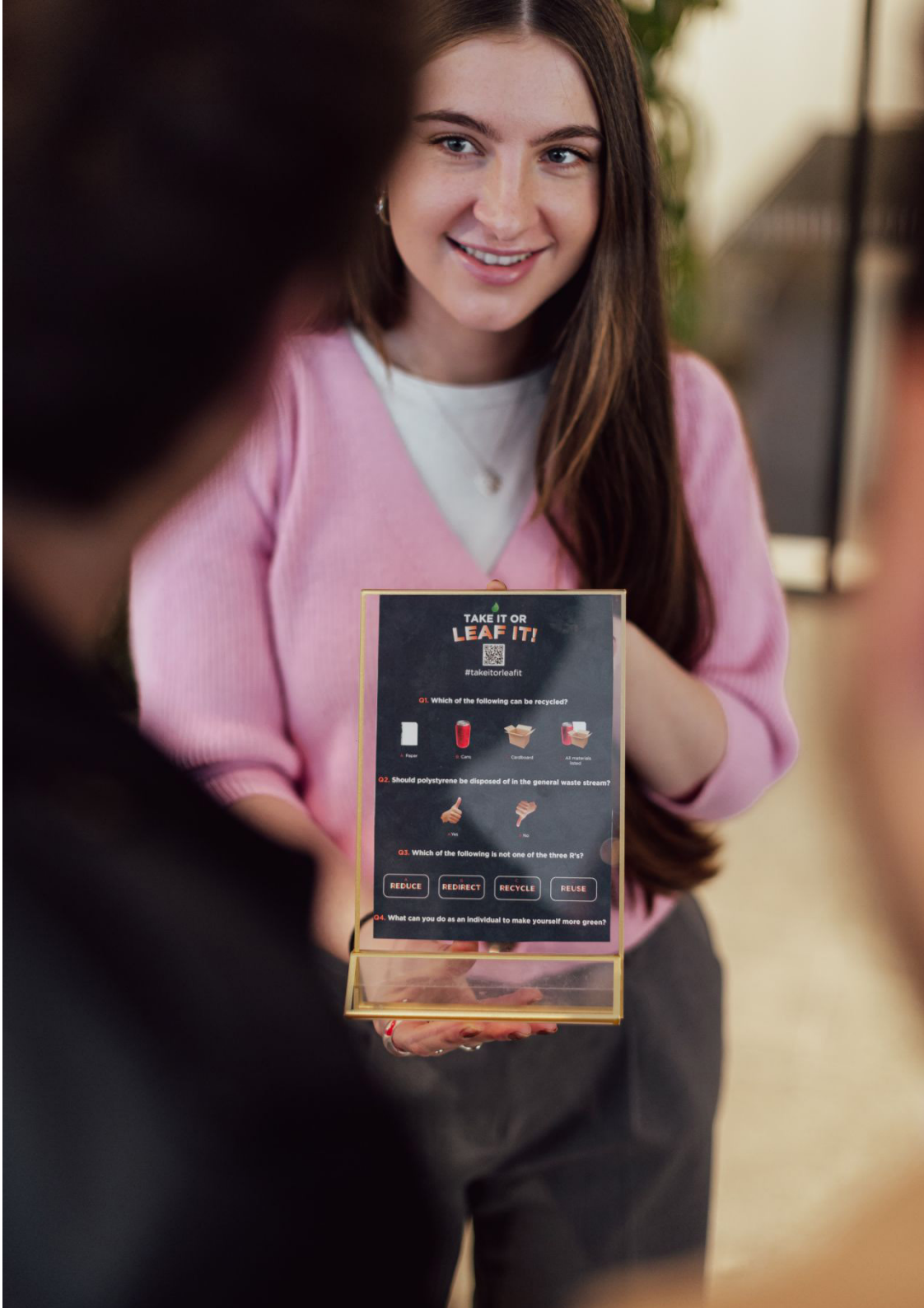
Facility visits
Go behind the scenes! Take a guided tour of our Material Recovery Facility (MRF) and see how your waste gets a second life. Learn sustainable disposal tips firsthand.



Signage
Recycle right every time. Our posters simplify sorting with colour coded & clear instructions, and images. Customisable for any space and language.



Sustainability webinars
Go green by joining our quarterly webinars! Learn about sustainability, engage with experts, and drive positive change in your facility.





Containers

Bycycler Containers

Bywaters provides external containers in three different sizes for dry recyclables and non recyclables waste, which are colour-coded for easy identification. The available sizes are 240 litres, 770 litres, and 1100 litres. The containers are coloured orange and blue, designed to complement the entire Bycycler range. Furthermore, all of these containers are fully compatible with our dustcart fleet, ensuring efficient waste management and collection.



240 litre



770 litre



1100 litre



Glass containers

Bywaters offers 240-litre containers for glass specifically designed for the recycling of mixed glass bottles and jars. These specialised containers are a part of our commitment to sustainable waste management, making it easy for individuals and businesses to participate in glass recycling efforts and contribute to a greener environment.



240 litre

Food Containers

Bywaters offers a sustainable food recycling service that keeps your food waste out of landfill. Our durable, clean, secure, and purpose-built food waste wheelie bins come in two sizes: 120 litres and 240 litres.



120 litre



240 litre

Confidential waste containers

Bywaters are pleased to offer the unique confidential secure container for all your confidential paper.

We offer a wide choice of secure solutions from security containers, sacks and seals, to enclosed lockable skips.



Confidential Bag



120 litre



240 litre



660 litre

Confidential waste tags

Bywaters confidential waste containers come with optional waste tags for sorting different confidential waste types.



Media waste only



Confidential paper only (small)



Confidential paper only (large)

Battery Containers

Bywaters makes battery recycling easy with our Box and Tube containers, which are durable and compact containers for recycling portable (household) batteries.



Battery box



Battery tube

WEEE & Fluorescent Tube Containers

We offer a wide range of containers to our clients, enabling them to recycle their WEEE waste efficiently. These specialised containers are designed to accommodate different types of WEEE waste, ensuring proper separation and disposal of electronic and electrical equipment.



WEEE Box



Fluorescent Tube Station

Internal Containers

The Bycycler internal containers make it easy for staff to recycle at source and are ideal for offices looking to maximise their recycling and minimise their effort.



Essential Bin



U Bin



Stark Bin



Bin soft close



Combi bin



Contemporary

External containers

Skip Containers

Bywaters can provide a range of skips from 4 to 12 cubic yards (3 to 9.2 cubic metres) in capacity, perfect for disposing of bulky household waste such as furniture, garden waste, and building materials.



Rear End Loading (REL) Containers

Bywaters offers REL containers for dry recyclables and residual waste, colour-coded orange and blue to work in conjunction with the full Bycycler range. REL containers are easily loaded through waist-height rear doors. They also have Duraflex lids with front access. Those containers with Duraflex lids are lockable. They come as 8, 12, 16 yard containers.



Rolonof Containers

Bywaters can provide a range of open and enclosed roll-on/roll-off containers in the following sizes: 15, 30 and 40 cubic yards. The 15 cubic yard container is particularly appropriate for heavy loads due to its low sides for ease of loading. The larger containers are walk-in and are suitable for bulky waste or when more capacity is needed.



Baby Hooklift Containers

These containers can be delivered on a baby hooklift vehicle and are therefore ideal for areas with space, height or weight limitations.

These containers feature 'barn door' walk-in access. They are fully enclosed and lockable, offering secure storage and are particularly suitable for large bulky items that may not fit into a standard skip container. The open door allows items to be wheeled in if desired.



Compactors

A waste compactor is a machine that compresses waste into manageable volumes. This process offers several advantages: efficient use of space, fewer collections, reduced costs, as well as a lower environmental impact.

Bywaters offers these to our clients with facilities that produce large amounts of waste.

Our compactor options vary to suit our clients' specific requirements, from compact portable models to larger industrial units.

Skip Compactors

Bywaters specialises in compaction systems and holds the largest stock in the London area. These portable compactors are integral units incorporating the container and compaction unit.

Our compactors are fully supported by our team of compactor engineers who service and maintain our equipment to the highest standards.



Baby Hook Compactor

Much like the skip compactor, this baby hook compactor is also available with manual loading. This compactor also benefits from having its cylinders tucked away, ensuring that they do not need to be deep cleaned. This compactor is suitable for all waste types.



The POD

The Pod, smaller than traditional compactors, fits into confined spaces where most don't. It comprises two sections - the Pod and the Compaction unit - allowing for easy exchange of full Pods during collection. It can compact up to four tonnes of material, equivalent to 24-30 1100L bins, while occupying the space of only six bins. When space is limited but waste production is high, the Pod System offers an ideal solution.



Compactors

Static Compactor

On-site static compactors are heavy-duty machines, explicitly designed for compacting large volumes of dense waste material into a smaller physical space. For businesses of all sizes, a static waste compactor can provide a variety of advantages and are a more efficient alternative to bins and skips.



Balers

These are typically found in recycling facilities or businesses that generate a lot of waste. They compress materials like cardboard, plastic, metal cans, or paper into dense cubes. This reduces the volume of the waste, making it easier to transport and store.



In-Bin Compactor

Bywaters offers 1100-liter in-bin compactors for general and recyclable materials, perfect for limited space. Specifically designed for durability, cleanliness, and security, these compactors offer a lasting and safe waste solution. With up to four times increased volumes per bin, maximum payloads are achieved without additional space requirements.



Innovations

Weightron

Weightron is specially designed on-site weighing solution. It provides accurate and detailed data of their liking to help you with a wide range of issues, including monitoring recycling, monitoring financial waste information for multi-level sites and giving you clear indications for developing clear auditing plans.

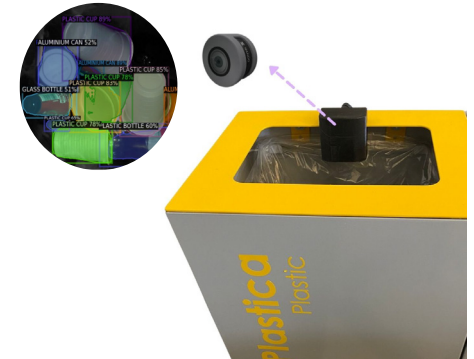
To complement the Byweigh system, Bywaters are able to create tailored



barcoded stickers for each tenant or floor (dependent on your requirements). The barcode data is pre-programmed into the Byweigh system to enable data streaming, making the Byweigh system a convenient and easy way to keep track of all your waste.

Nando AI

Nando uses AI technology to reduce environmental impact by monitoring waste produced by weight and type as well as picking up on any contamination. This data can be used to identify the most common cause of contamination as well as providing the information required to increase environmental sustainability.



ORCA

ORCA is an innovative new technology designed to process your food waste on site; reducing vehicle movements, minimising CO₂ emissions and eliminating bad odours. This versatile system helps you to take control of your kitchen, reducing wastage through detailed reporting and cutting-edge technology. Mimicking the natural digestion process, ORCA mixes your food waste with microorganisms within a compact container. Once digested, all that is left is a liquid which is safely expelled down your waste pipe.



Awards

Bywaters' commitment to sustainable waste management has been recognised through numerous awards over the years, a testament to our dedication to continuous improvement. These accolades not only validate our efforts but also highlight the impact achieved in collaboration with our valued clients.

We take pride in partnering with clients to win awards. Bywaters approaches each contract as a true partnership, working hand-in-hand to enhance sustainability, boost recycling rates, and champion environmental initiatives. These shared successes demonstrate the power of collaboration in driving positive environmental change.

A selection of awards we have won:



Accreditations

Bywaters is fully compliant with all relevant waste management and sustainability legislation, and we have also attained a variety of accreditations for going above and beyond these requirements.





Corporate Social Responsibility (CSR) & Environmental, Social and Governance

Corporate Social Responsibility (CSR) and Environmental, Social, and Governance (ESG) are central to Bywaters' mission. We strive to provide the most sustainable waste management solutions possible while collaborating with our clients and select charities to build a more sustainable society. We participate in a multitude of initiatives and partner with multiple charities to achieve this goal!



Charities we work with:





**Reliable
Resource
Management**

**High Quality
Reporting**

**Reduced
Waste and
Costs**

**On Site
Support**

**Hit
Sustainability
Goals**

